

CLALLAM COUNTY COMMUNITY PROFILE

2005

MEETING THE CHALLENGE



United Way
of Clallam County



INFORMATION GATHERED AS A TEAM EFFORT...

Demographics: how we look as a community

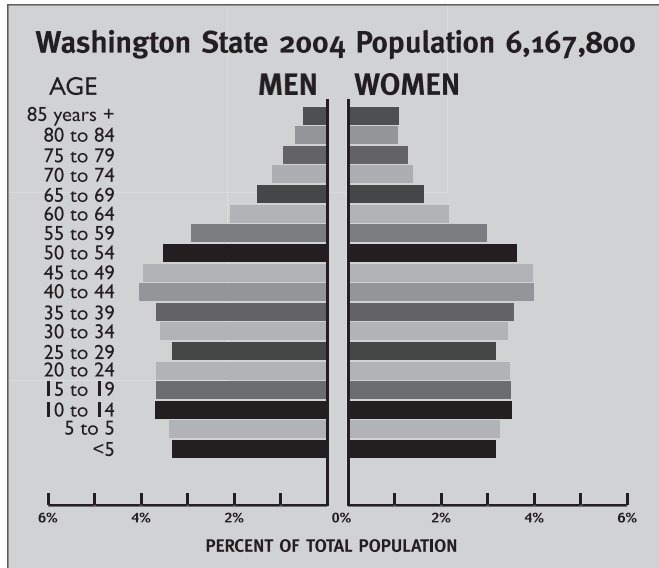
In 1998, United Way of Clallam County launched a Healthy Communities Initiative to encourage collaborative action and efficient use of resources. County leaders joined forces with United Way as a team to develop a plan of action.

This 2005 Community Profile is intended to help identify our strengths and weaknesses as a community. It indicates our health, our basic needs, and the condition of our families.

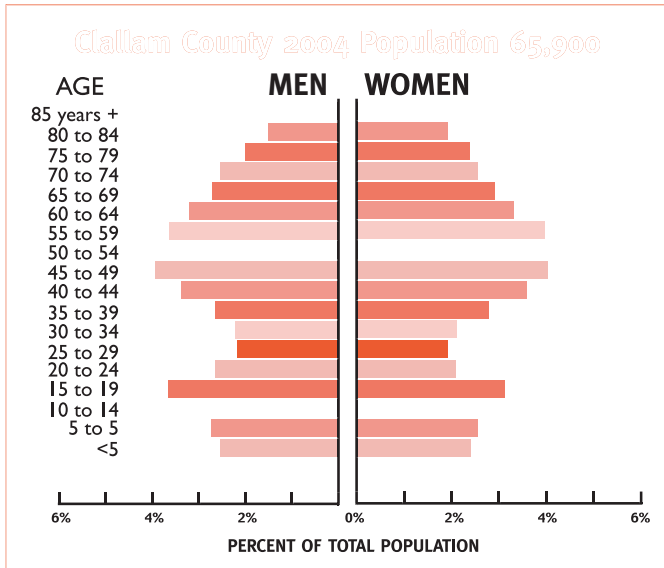
This Community Profile is compiled using

public data and represents a broad range of quantitative measures. It is a "road map" for professional caregivers, volunteers, parents, city and county officials, and citizens concerned about our community.

Healthy Communities' mission is to help make our community a better place to work, raise a family, retire and enjoy life. Working together we can accomplish this mission.



WA Office of Financial Mgmt., population estimate

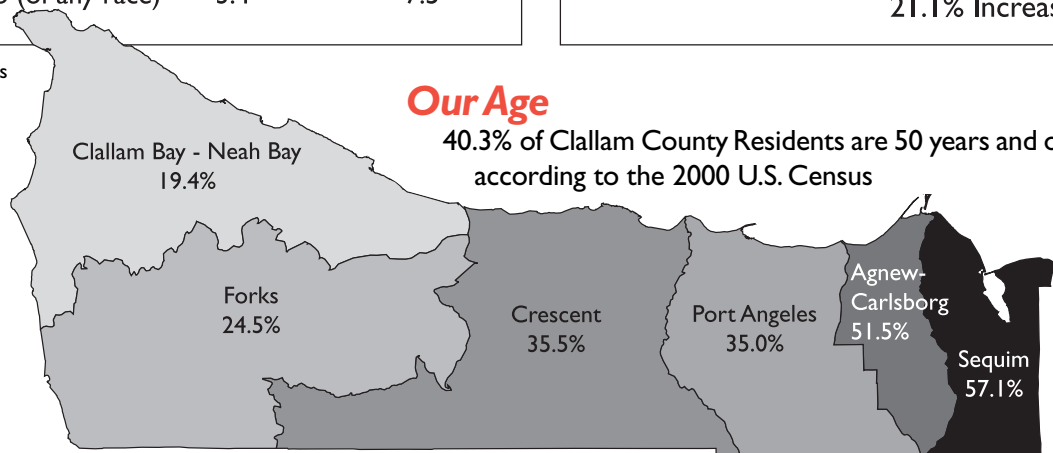
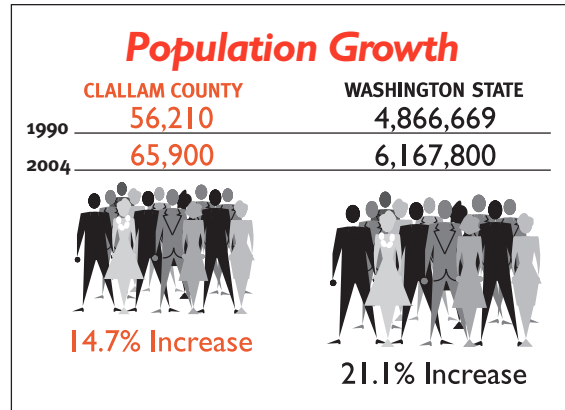


Source: 2000 U.S. Census

Our Race & Ethnicity

| | CLALLAM COUNTY | WASHINGTON STATE |
|-----------------------------------|----------------|------------------|
| White | 89.1% | 81.8% |
| Black or African American | 0.8 | 3.2 |
| American Indian or Alaskan Native | 5.1 | 1.6 |
| Asian | 1.1 | 5.5 |
| Some other race | 3.8 | 7.9 |
| Hispanic or Latino (of any race) | 3.4 | 7.5 |

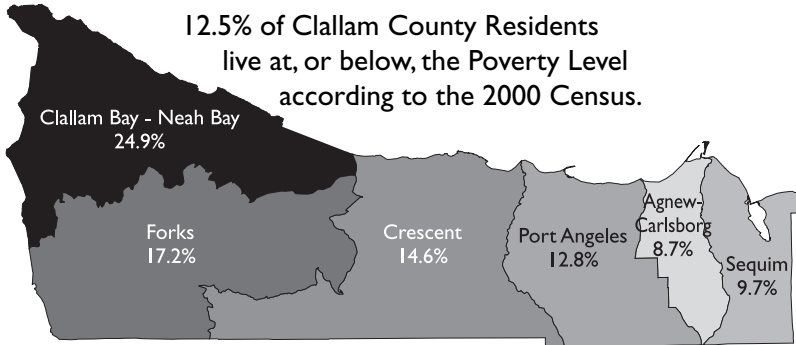
Source: 2000 U.S. Census



Above map shows percentage of people 50 and older in each area of Clallam County

Poverty

12.5% of Clallam County Residents live at, or below, the Poverty Level according to the 2000 Census.



Above map shows percentage of poverty in each area of Clallam County.

People in Clallam County Living in Poverty

| | 1990 | 2000 |
|---|-------|-------|
| People under 18 | 17.4% | 17.6% |
| Female-headed households with related children under 18 | 50.5% | 42.2% |
| People 65 and over | 8.5% | 6.8% |

Source: U.S. Census 2000

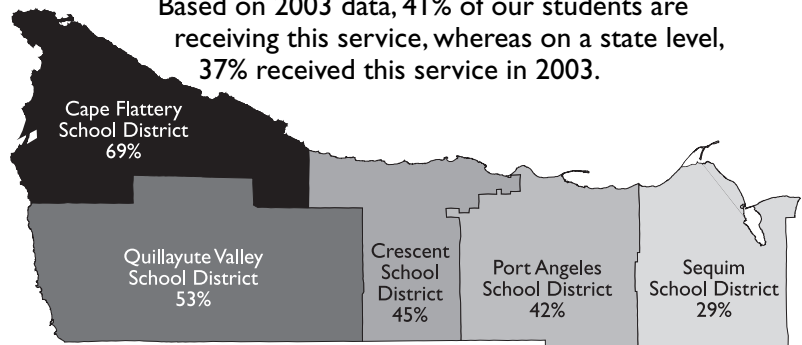
Income

| | MEDIAN HOUSEHOLD INCOME* 2000 | PER CAPITA INCOME** 2000 |
|----------------|-------------------------------|--------------------------|
| Clallam County | \$32,268 | \$24,326 |
| Washington | 50,152 | 31,230 |
| | 2004 | 2002 |
| Clallam County | \$41,108 | \$26,959 |
| Washington | 51,762 | 32,638 |

*Washington State Office of Financial Mgt. (OFM)
 **U.S. Dept. of Commerce, Bureau of Economic Analysis

Free and reduced lunches in our schools

Based on 2003 data, 41% of our students are receiving this service, whereas on a state level, 37% received this service in 2003.



Above map shows percentage of free and reduced-price lunches by School District in Clallam County.

•Source: Office of Superintendent of Public Instruction (OSPI)

Livable Income (income needed for self-sufficiency)

2004

In Clallam County, based on a family with 2 parents and 2 children **\$38,314**

Source: Washington State Kids Count

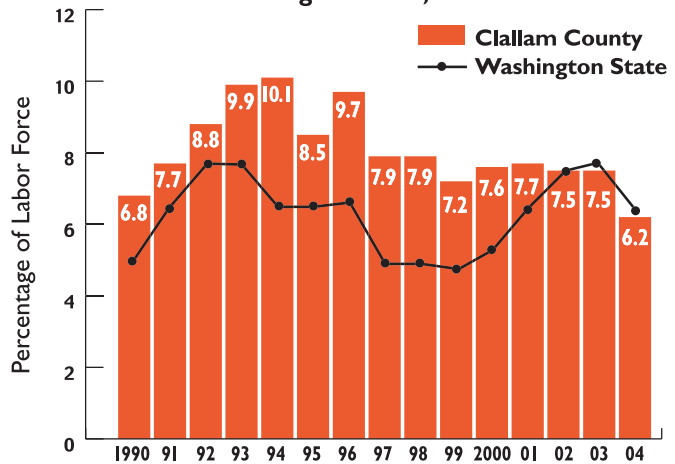
Average Monthly Wage

| 2001 | MONTHLY | HOURLY |
|------------------|---------|---------|
| Clallam County | \$2,105 | \$12.17 |
| Washington State | 3,122 | 18.05 |

Source: WA Kids Count

Employment

Average Annual Unemployment Rates for Clallam County and Washington State, 1990-2004



Source: WA State Employment Security Dept.

| WORKFORCE (Clallam County) | DEC. 2001 | DEC. 2004 |
|--------------------------------|-----------|-----------|
| No. of people in the workforce | 24,020 | 26,960 |
| No. of people employed | 22,150 | 25,360 |

Meeting our basic needs...

HOUSING

| | Median Priced Home 2002 | Median Priced Home 2004 |
|------------|-------------------------|-------------------------|
| Clallam | \$131,400 | \$178,500* |
| Washington | 188,500 | 231,700* |

*4th Quarter

ANNUAL INCOME REQUIRED TO PURCHASE MEDIAN-PRICED HOME:

\$39,888/year ■ \$3,324/month ■

Source: WA Center for Real Estate Research



ANNUAL INCOME NEEDED TO PAY FAIR MARKET RENT (FMR) 2004:

\$23,080/year ■ \$1,923/month ■ \$11.12/hour

A unit is considered affordable if it costs no more than 30% of renter's income.

Of the total households in Clallam County, 27% ARE RENTERS*

The fair market rent (FMR) for a 2-bedroom unit is \$577 per month.

*Washington state, 31%

Source: National Low Income Housing Coalition

Homeless in Clallam County

Point-in-time census conducted October 2003 809 individuals 536 households

Source: Serenity House of Clallam County

Unmet Shelter Needs in Clallam County

| | 2003 | 2004 |
|------------------------|------|------|
| Individuals | 246 | 321 |
| Families with children | 277 | 137 |

Source: Clallam County Shelter Provider Network, lead agency Serenity House

Residents of Households, Age 65 & Up, Living Alone

Clallam County 26.8% Washington State 28.4%

Source: 2000 Census



Meals on Wheels (Seniors)

| | 2001 | 2003 | 2004 |
|----------------------------|--------|--------|--------|
| Meals on Wheels deliveries | 32,416 | 48,497 | 51,813 |

Source: Olympic Community Action, Olympic Area Agency on Aging

Strengthening Families and Individuals



Families with Children

| | Clallam | Washington State |
|--|-----------|------------------|
| Families with children | 25.7% | 33.3% |
| Married-couple families with own children under 18 | 17.4% | 24.7% |
| Female-headed household with children under 18 | 5.2% | 6.2% |
| Grandparents raising grandchildren: # of grandparents with own grandchildren under 18 years old in household | 663 | 84,592 |
| Number of grandparents completely responsible for grandchildren (parent absent or incapacitated) | 326 (49%) | 49,251 (58%) |

Source: U.S. Census 2000

Child Abuse & Neglect

| | 2002 | 2004 |
|---|------|------|
| Children put in foster care due to neglect | 41 | 48 |
| Parental rights terminated due to abuse & neglect | 6 | 41 |

Source: Office of the Administration of the Courts

Who's Caring for Clallam's Children?

| | 2001 | 2002 |
|---|-------|-------|
| Estimated number of children in "care zone" (younger than 13 years, with parents working) | 6,067 | 6,042 |
| | 2001 | 2004 |
| Total licensed childcare slots | 1,394 | 1,322 |

Source: WA State Child Care Resource & Referral Network

Family Violence

| | 2000 | 2003 |
|---|------|------|
| Clallam County Superior Court Protection Orders Requested | 257 | 260 |
| DV Homicides in Clallam County | 1 | 2 |
| DV Abuser Suicides in Clallam County | 0 | 1 |

Source: Office of the Administrator of the Courts, WA State Domestic Violence Fatality Review

Average Monthly Licensed Child Care Rates

| | 2004 CENTER RATES | | 2004 IN-HOME RATES | |
|------------|-------------------|-------|--------------------|-------|
| | Clallam | State | Clallam | State |
| Infant | \$589 | \$880 | \$667 | \$650 |
| Toddler | 575 | 740 | 650 | 650 |
| Pre-School | 701 | 650 | 585 | 542 |

Source: WA State Child Care Resource & Referral Network

Clallam County Maternal and Child Health

| | 1991-93 | | 2001-03 | | |
|---------------------------------------|--------------|-----------------|--------------|-----------------|---|
| | Rate | Number per year | Rate | Number per year | |
| Moms Who Smoke During Pregnancy | 25% (± 2.2) | 164 | 24% (± 2.3) | 144 | ▼ |
| Late or No Prenatal Care | 1.6% (± 0.6) | 11 | 3% (± 2.2) | 17 | ▲ |
| Low Birthweight (<2500g) | 3.4% (± 0.8) | 23 | 3.4% (± 0.9) | 20 | - |
| Medicaid Paid Maternity Care | 47% | 342 | 61% | 370 | ▲ |
| General Fertility Rate (15-44 years)* | 65 (± 2.8) | 696 | 58 (± 2.7) | 602 | ▼ |
| Births to Moms 15-17 Years* | 31 (± 6.8) | 38 | 14 (± 3.9) | 19 | ▼ |

*Rate per 1,000 women. Source: WA State Dept. of Health, Center for Health Services

Supporting Mental and Emotional Health



The BRFSS is a telephone survey of adults conducted to collect data on personal health behaviors on local, state, and national levels. A BRFSS survey was conducted in Clallam County between April 2003 and March 2004. 913 residents were surveyed. The chart shown here represents a few of the questions asked of individuals. You may find more information at:

www.clallam.net/healthservices

SUICIDE HOTLINES :

(800) 273-TALK
 (800) 273-8255
 Youth Suicide Line
 (877) 968-8454
 Hours: 24 HOUR

| QUESTION | Clallam 2003-04 Percent | Washington 2003 Percent |
|---|-------------------------|-------------------------|
| Mental Health How adults rate their general health? | | |
| Excellent | 24% (± 3%) | 22% (± 1%) |
| Very Good | 30% (± 3%) | 35% (± 1%) |
| Good | 32% (± 3%) | 30% (± 1%) |
| Fair | 10% (± 2%) | 10% (± 1%) |
| Poor | 4% (± 2%) | 4% (± 1%) |
| Adults limited in activities because of physical, mental or emotional problems | 29% (± 3%) | 24% (± 1%) |
| Adults who, before they were 18, experienced any type of physical or sexual abuse or witnessed a parent being abused | 25% (± 4%) | |
| Adults who are either often bothered by feeling down or depressed or who often experience little interest or pleasure in doing things | 22% (± 4%) | |

Source: Clallam County Health and Human Services, Clallam County 2003-04 Behavioral Risk Factor Surveillance System (BRFSS) Survey.

Suicides by Age Group

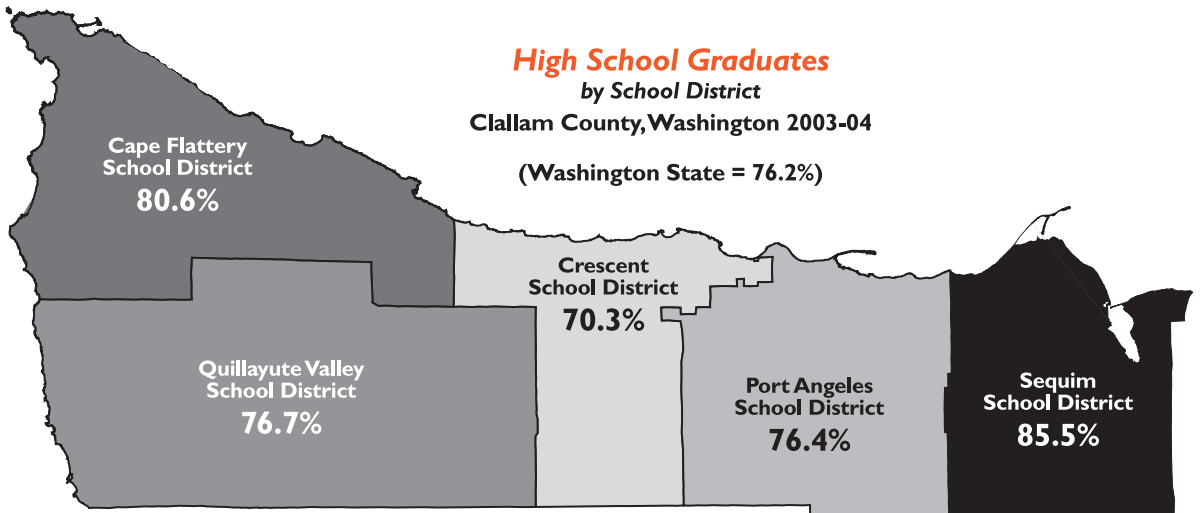
Rates per 100,000, calculated for a 3-year period.

| Age Group | Clallam 1991-93 | | Clallam 2001-03 | | Washington 2001-2003 Rate |
|-------------|-----------------|-----------------|-----------------|-----------------|---------------------------|
| | Rate | Avg. # Per Year | Rate | Avg. # Per Year | |
| 15-24 years | 11 (± 18) | 1 | 22 (± 22) | 2 | ▲ 10.9 |
| 25-44 years | 25 (± 15) | 4 | 28 (± 17) | 4 | ▲ 15.6 |
| 45-64 years | 16 (± 15) | 2 | 18 (± 12) | 3 | ▲ 17.5 |
| 65 & older | 55 (± 26) | 7 | 36 (± 20) | 5 | ▼ 20.8 |

Source: WA State Dept of Health, Center for Health Statistics.

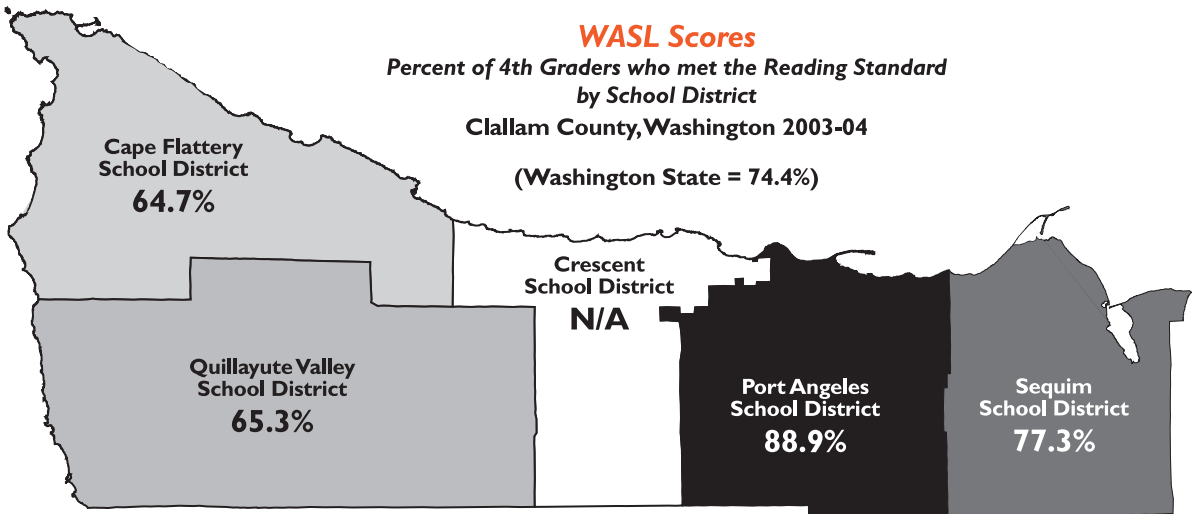
Helping Children Succeed

High School Graduates by School District Clallam County, Washington 2003-04 (Washington State = 76.2%)



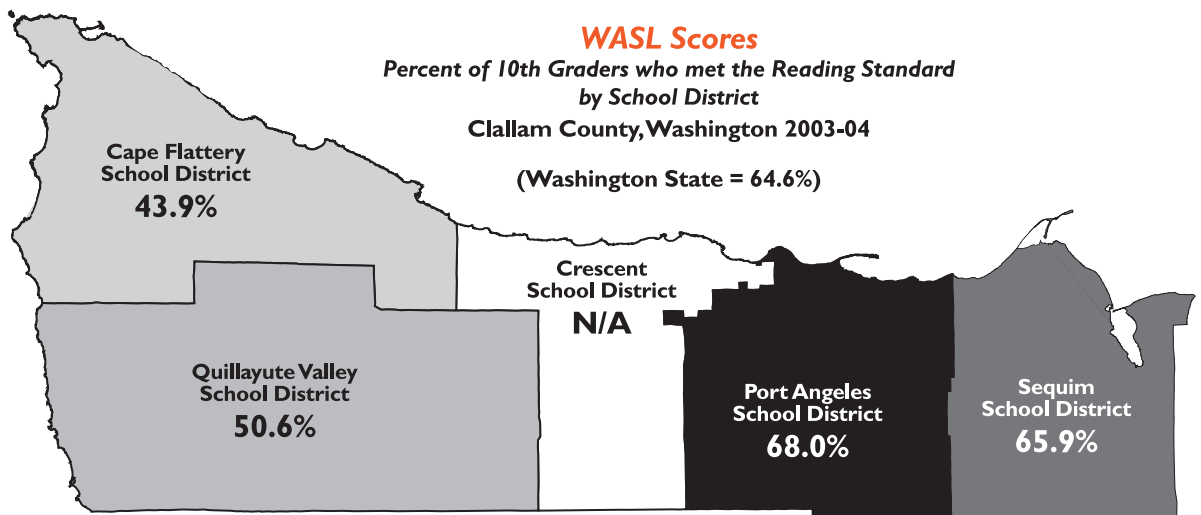
Source: Office of Superintendent for Public Instruction

WASL Scores Percent of 4th Graders who met the Reading Standard by School District Clallam County, Washington 2003-04 (Washington State = 74.4%)



Source: Office of Superintendent for Public Instruction

WASL Scores Percent of 10th Graders who met the Reading Standard by School District Clallam County, Washington 2003-04 (Washington State = 64.6%)



Source: Office of Superintendent for Public Instruction

Physical Health and Safety



The chart shown here represents a

few of the questions asked during the 2003-2004 BRFSS telephone survey. You may find more information at:

www.clallam.net/healthservices

| BRFSS QUESTION | Clallam 2003-04 Percent | Washington 2003 Percent |
|--|-------------------------|-------------------------|
| Smoking Adults who smoke cigarettes | 19% (± 3%) | 20% (± 1%) |
| Weight, Physical Activity, Safety in the Home <i>Weight classifications based on BMI</i> | | |
| Not overweight (Body Mass Index < 25) | 38% (± 4%) | 42% (± 1%) |
| Overweight (Body Mass Index 25-29) | 39% (± 4%) | 37% (± 1%) |
| Obese (Body Mass Index > 30) | 23% (± 3%) | 22% (± 1%) |
| Adults meeting recommended guidelines for moderate physical activity (at least 30 min., 5 or more days per week) | 39% (± 4%) | 54% (± 1%) |
| Adults with loaded and unlocked firearms in or around the home | 6% (± 2%) | |

Source: Clallam County Health and Human Services, Clallam County 2003-04 Behavioral Risk Factor Surveillance System (BRFSS) Survey.

Deaths Due to Motor Vehicle Accidents (by age group)

Rates per 100,000, calculated for a 3-year period.

| Age Group | Clallam 1991-93 | | Clallam 2001-03 | | Washington 2001-2003 Rate |
|-------------|-----------------|-----------------|-----------------|-----------------|---------------------------|
| | Rate | Avg. # Per Year | Rate | Avg. # Per Year | |
| 1-14 years | 9 (± 11) | 1 | 10 (± 12) | 1 | 3.8 |
| 15-24 years | 11 (± 18) | 1 | 49 (± 31) | 4 | 22.1 |
| 25-44 years | 20 (± 14) | 3 | 14 (± 13) | 2 | 12.2 |
| 45-64 years | 5 (± 9) | 1 | 22 (± 19) | 4 | 10.6 |
| 65 & older | 24 (± 18) | 3 | 34 (± 19) | 5 | 19.5 |

Source: WA State Dept of Health, Center for Health Statistics.



Leading Causes of Death

Top Ten Leading Causes of Death

Rates per 100,000, calculated for a 3-year period.

Clallam County

| Rank | Type of Death | Rate 2001-03 | Avg. # Per Year |
|------|-----------------------------------|--------------|-----------------|
| | All cause mortality | 799.5 (± 33) | 805 |
| 1 | Heart disease | 191.1 (± 16) | 200 |
| 2 | Malignant neoplasms (cancer) | 190.6 (± 16) | 194 |
| | Colon cancer | 18.0 (± 5) | 19 |
| | Lung cancer | 48.3 (± 8) | 50 |
| | Breast cancer (in women) | 25.8 (± 9) | 14 |
| | Prostate cancer (men) | 23.8 (± 9) | 11 |
| 3 | Cerebrovascular disease (stroke) | 76.6 (± 10) | 83 |
| 4 | Diabetes related mortality | 66.1 (± 9) | 70 |
| 5 | Accidents | 49.7 (± 10) | 38 |
| | Motor vehicle accidents | 22.4 (± 7) | 16 |
| 6 | Chronic lower respiratory disease | 42.0 (± 8) | 46 |
| 7 | Alzheimer's disease | 37.6 (± 7) | 41 |
| 8 | Suicide | 20.3 (± 7) | 14 |
| 9 | Influenza and Pneumonia | 18.4 (± 5) | 19 |
| 10 | Infectious and parasitic diseases | 10.6 (± 4) | 10 |

Washington

| Rate 2001-03 |
|--------------|
| 790.4 |
| 195.8 |
| 191.6 |
| 17.7 |
| 55.2 |
| 24.0 |
| 28.0 |
| 65.1 |
| 75.8 |
| 36.0 |
| 12.1 |
| 47.7 |
| 39.0 |
| 12.8 |
| 17.2 |
| 13.9 |

Source: WA State Dept of Health, Center for Health Statistics.

Death Rates from All Causes

Rates per 100,000, calculated for a 3-year period.

| Age Group | Clallam 1991-93 | | Clallam 2001-03 | | Trend | Washington 2001-2003 Rate |
|----------------|-----------------|-----------------|-----------------|-----------------|-------|---------------------------|
| | Rate | Avg. # Per Year | Rate | Avg. # Per Year | | |
| Infants <1 yr. | 959 (± 435) | 7 | 375 (± 307) | 2 | ▼ | 575.9 |
| 1-14 years | 38 (± 22) | 4 | 22 (± 18) | 2 | ▼ | 18.3 |
| 15-24 years | 86 (± 45) | 5 | 107 (± 45) | 8 | ▲ | 65.7 |
| 25-44 years | 146 (± 35) | 24 | 161 (± 39) | 23 | ▲ | 123.1 |
| 45-64 years | 720 (± 88) | 88 | 639 (± 68) | 116 | ▼ | 534.4 |
| 65 & older | 4554 (± 221) | 550 | 4718 (± 210) | 653 | ▲ | 5017.6 |

Source: WA State Dept of Health, Center for Health Statistics.



Access to Health Care



The chart shown here represents a few of the questions asked during the 2003-2004 BRFSS telephone survey. You may find more information at:

www.clallam.net/healthservices

| QUESTION | Clallam 2003-04 Percent | Washington 2002 Percent |
|---|-------------------------------|-------------------------------|
| Access to Care | | |
| Adults 18-64 years with health insurance | 86% (± 4%) | 87% (±2%) |
| Adults 18-64 years without health insurance | 14% (± 4%) | 13% (±2%) |
| Adults who visited a doctor for a checkup in the past year | 72% (± 4%) | |
| Adults who were unable to see a doctor in the past year due to cost | 11% (± 3%) | |

Source: Clallam County Health and Human Services, Clallam County 2003-04 Behavioral Risk Factor Surveillance System (BRFSS) Survey.



Healthy People – 2010 Goals

Meeting the Challenge

This 2005 Community Profile, has given you a glimpse of the needs, services, and condition of our lives in Clallam County. In comparing the county statistics with the statistics of Washington State, you can see how we stand in relation to the larger community. There are areas where we are doing quite well, and there are areas where we can improve.

In considering ourselves as a people who are committed to the well-being of every one of our neighbors, and by using the statistics in this Profile, a few goals that will help us improve the quality of life in Clallam County are:

- Ensure all people in Clallam County have adequate housing, food, clothing, and access to short-term emergency services as necessary.
- Ensure all families and individuals in Clallam County are safe, emotionally healthy and stable, and have the knowledge and skills to achieve their full potential as members of our community.
- Ensure all people in Clallam County have access to adequate mental health services enabling them to realize their full potential for wellness and health.
- Ensure all children and youth in Clallam County have the opportunities and resources to grow into socially responsible, economically productive and caring adults.
- Ensure all people in Clallam County have access to preventive, primary, emergent, and specialized medical and dental care in order to live healthy and safe lives.



Finding Additional Information...

United Way
www.unitedwayclallam.org

United Way InfoLink (Information & Referral Assistance)
www.unitedwayinfo.org • 1-800-627-0335

Clallam County Health & Human Services (CCHHS)
www.clallam.net/healthservices

Behavioral Risk Factor Surveillance System (BRFSS) *(for health data)*
www.clallam.net/healthservices/htm/brfss.htm
www.cdc.gov/brfss



**United Way
of Clallam County**

P.O. Box 937
Port Angeles, WA 98362
(360) 457-3011
www.unitedwayclallam.org



Clallam County Health and Human Services
223 E. 4th Street, Suite 14
Port Angeles, WA 98362
(360) 417-2303
www.clallam.net/healthservices